



Welcome to the **Future of Video Surveillance**

Cloud-Enabled & AI-Powered IoT
Surveillance Solution



About Zygal

Ushering a New Era of **Intelligent Surveillance**

The age of AI has arrived, and at Zygal, we are redefining how you think about surveillance!

With over 10 years of expertise in product development and manufacturing, we are focused on our singular vision to bring in a new era of AI-powered Internet of Things (AIoT) video surveillance solutions.

Zygal has been revolutionizing security solutions through cloud capabilities and artificial intelligence with our state-of-the-art assembly & SMT unit, and a strong team of 120+ R&D professionals spanning Hardware & Software Design and AI/ML Engineers.

With a robust track record in catering to industry giants in BFSI, retail, logistics and supply, Zygal stands as a trusted partner in safeguarding some of the most critical sectors in India. Currently, we monitor 3.5+ million connected devices and 1.2+ billion alerts across 25k+ locations around the country.



10+ Years of Expertise



120+ Experienced Professionals



3.5+ Million Connected Devices



20k+ sq. ft. of Advance Assembly & SMT Unit



1.2+ Bn Alerts Monitored via Zygal RPA Solution



4,000+ Pincode Field Support

Certifications



Zygal AIoT Cloud VMS Platform

Future-Ready Monitoring with Intelligence at the Core



Enterprise-Ready & AI-powered Video Management Platform

Manage surveillance across various locations with our unified, cloud-based platform with built-in machine learning capabilities that are open, scalable, secure and straightforward. The platform integrates all third-party cameras, existing sensors, access control systems, dashboards, external viewers, and communication systems. It continually analyzes video feeds in real-time, making it ideal for both on-premise deployments and large dispersed business installations.



Control at Your Fingertips

Hassle-free, centralized web-based interface that can be accessed from anywhere with no additional plugins or installations.



Detect Objects and Events

Get immediate alerts based on pre-defined SOP and unusual activity detection.



Smarter, Faster AI-Powered Analysis

Filter through hours of video feed in minutes to gain actionable and accurate insights into people, behaviours, vehicles, events, or other objects in real-time.



Improved Operational And Occupancy Awareness

Use map view, generate heat maps, detect intruders, trigger missing staff alerts, and monitor time access to improve efficiency and decision-making.



Robotic Process Automation

Monitor and optimize defined SOPs with minimal human intervention and 100% accuracy.



Seamless Integration

Add new devices and sites or integrate your existing enterprise systems on one unified, scalable cloud platform - all at no extra cost.



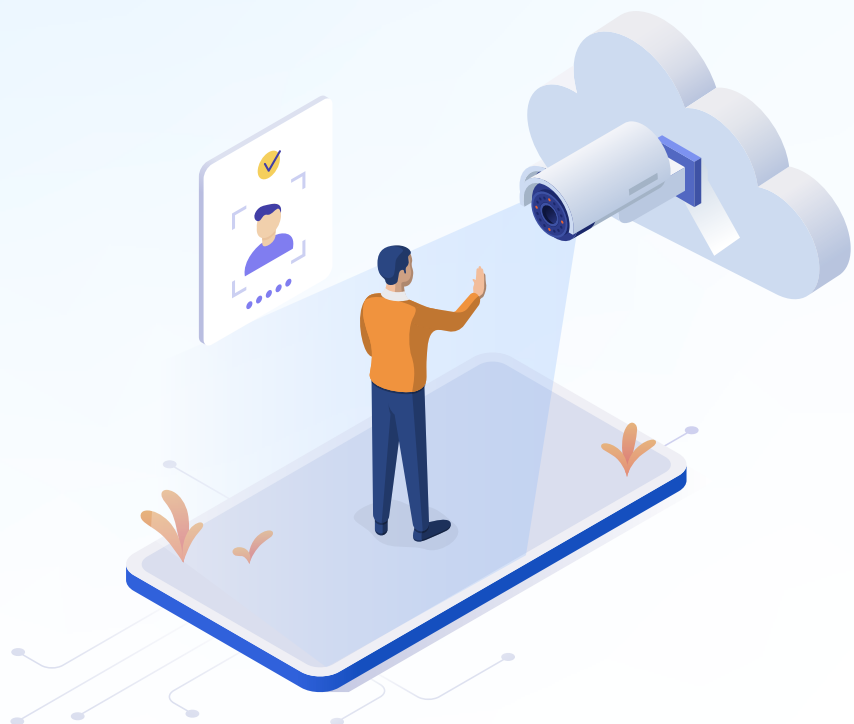
Secure End-to-End Encryption

Safeguard sensitive information with encrypted data transmission and storage, secure remote access, and automated software updates from the cloud.

Video Solutions

Meet Our Range of **Cloud-based AI Cameras**

Say goodbye to outdated surveillance with our range of cloud-connected cameras



ZYGAL

Mini Dome

Elevate your surveillance game with our sleek powerhouse - Mini Dome



ZYGAL Mini Dome



Basic Features

- **4 MP, 2.8 mm Fixed Lens:** Higher resolution ensures sharper image quality
- **Turret Dome with IR:** Offers versatile surveillance capabilities
- **IP Camera with POE:** Enables easy and efficient connectivity
- **Metal + Plastic Body:** Durable construction for longevity
- **IP66 Weatherproof:** Complete weather resistance
- **ONVIF Compatibility:** Effortless integration into existing systems
- **Mic:** Enhanced audio capture



Special Features

- **Health Check:** Ensures constant connectivity for uninterrupted surveillance
- **Cloud Backup:** Automated data protection to prevent loss
- **Adaptive IR:** Enhanced imaging in varying light conditions



AI Features

- **AVCA Compression:** Enhanced data efficiency for better storage and bandwidth management
- **AI-Based Playback:** Detailed analysis for better insights



Mini Dome Specifications

| | |
|---------------------------------|---|
| Image sensor | 4MP |
| Image sensor size format | 1/3 Inch |
| Type of Enclosure | Plastic with Metal- IP66 |
| Lens | Focal length: 2.8mm Aperture: f1.6 Fixed lens |
| IR night vision | Adaptive IR IR-cut filter IR range: 15m |
| Maximum resolution & Frame rate | Main stream: 4MP 2560×1440@25fps Sub-stream: D1(720*576), VGA (640*360) |
| Dynamic range | DWDR |
| Video compression | H.264+AVCA, H.265+AVCA |
| Speaker Support | NA |
| SD/TF Card | NA |
| Audio | In built Microphone |
| Security | TLS 1.2/AES128 |
| Network protocols | IPv4, HTTPS, TLS, DNS, mDNS, DNS-SD, NTP, Onvif Profile S, G, T RTSP, RTP, RTCP, ICMP, DHCP, ARP Streaming: RTP/UDP, RTP/RTSP/HTTPS/TCP |
| Power source | PoE, 12v DC |
| Power consumption | 12v 1A |
| Connection | PoE Ethernet, 12V DC connector |
| Installation aid | Mount template Screws and wall plugs included |

ZYGAL Dome

Secure your premises effectively
with our Dome camera



ZYGAL Dome



Basic Features

- **4 MP, 2.8 mm Fixed Lens:** Higher resolution ensures sharper image quality
- **Vandal-Proof Dome:** Resilience against tampering
- **IP Camera with POE:** Enables easy and efficient connectivity
- **Metal Body:** Durable construction for longevity
- **IP66 Weatherproof:** Complete weather resistance
- **ONVIF Compatibility:** Effortless integration into existing systems
- **TF Card Storage Up To 256 GB:** Extended data retention
- **Mic:** Enhanced audio capture



Special Features

- **Health Check:** Ensures constant connectivity for uninterrupted surveillance
- **Cloud Backup:** Automated data protection to prevent loss
- **Adaptive IR:** Enhanced imaging in varying light conditions
- **Speaker:** Improved communication



AI Features

- **AVCA Compression:** Enhanced data efficiency for better storage and bandwidth management
- **AI-Based Intrusion Detection:** Augmented security with proactive threat identification
- **AI-Based Playback:** Detailed analysis for better insights



Dome Specifications

| | |
|---------------------------------|---|
| Image sensor | 4MP |
| Image sensor size format | 1/3 Inch |
| Type of Enclosure | Metal Vandal Proof IK10/IP66 |
| Lens | Focal length: 2.8mm/4mm Aperture: f1.6 Fixed lens |
| IR night vision | Adaptive IR IR-cut filter IR range: 15m |
| Maximum resolution & Frame rate | Main stream: 4MP 2560×1440@25fps Sub-stream: D1(720*576), VGA (640*360) |
| Dynamic range | DWDR |
| Video compression | H.264+AVCA, H.265+AVCA |
| Speaker Support | Early Warning Alert |
| SD/TF Card | 256GB |
| Audio | In built Microphone |
| Security | TLS 1.2/AES128 |
| Network protocols | IPv4, HTTPS, TLS, DNS, mDNS, DNS-SD, NTP, Onvif Profile S, G, T RTSP, RTP, RTCP, ICMP, DHCP, ARP Streaming: RTP/UDP, RTP/RTSP/HTTPS/TCP |
| Power source | PoE, 12v DC |
| Power consumption | 12v 1A |
| Connection | PoE Ethernet, 12V DC connector |
| Installation aid | Mount template Screws and wall plugs included |

ZYGAL Dome Plus

Upgrade to the ultimate surveillance
sentinel with Dome Plus



ZYGAL Dome Plus



Basic Features

- **5 MP/8 MP (4K) Fixed Lens:** Enhanced zoom capability
- **Vandal-Proof Dome:** Resilience against tampering
- **IP Camera with POE:** Enables easy and efficient connectivity
- **Metal Body:** Durable construction for longevity
- **IP66 Weatherproof:** Complete weather resistance
- **ONVIF Compatibility:** Effortless integration into existing systems
- **TF Card Storage Up To 256 GB:** Extended data retention
- **Mic:** Enhanced audio capture



Special Features

- **Health Check:** Ensures constant connectivity for uninterrupted surveillance
- **Cloud Backup:** Automated data protection to prevent loss
- **Adaptive IR:** Enhanced imaging in varying light conditions
- **Speaker:** Improved communication



AI Features

- **AVCA Compression:** Enhanced data efficiency for better storage and bandwidth management
- **AI-Based Intrusion Detection:** Augmented security with proactive threat identification
- **Human, Vehicle, and Face Detection:** Precise identification for comprehensive surveillance
- **AI-Based Playback:** Detailed analysis for better insights



Dome Plus Specifications

| | |
|---------------------------------|---|
| Image sensor | 8MP |
| Image sensor size format | 1/2.8 Inch |
| Type of Enclousre | Metal Vandal Proof IK10/IP66 |
| Lens | Focal length: 2.8mm/4mm Aperture: f1.6 Fixed lens |
| IR night vision | Adaptive IR IR-cut filter IR range: 15m |
| Maximum resolution & Frame rate | Main stream: 8MP 3840*2160@20fps , 5MP 2592*1904@25fps Sub-stream: D1(720*576)@25fps,VGA (640*480)@25fps,Q720P(640*360)@25fps |
| Dynamic range | 120db WDR (true) |
| Video compression | H.264+AVCA, H.265+AVCA |
| Speaker Support | Early Warning Alert |
| SD/TF Card | 256GB |
| Audio | In built Microphone |
| Security | TLS 1.2/AES128 |
| Network protocols | IPv4, HTTPS, TLS, DNS, mDNS, DNS-SD, NTP, Onvif Profile S, G, T RTSP, RTP, RTCP, ICMP, DHCP, ARP Streaming: RTP/UDP, RTP/RTSP/HTTPS/TCP |
| Power source | PoE, 12v DC |
| Power consumption | 12v 1A |
| Connection | PoE Ethernet, 12V DC connector |
| Installation aid | Mount template Screws and wall plugs included |

ZYGAL Bullet

Experience next-level security
with our Bullet camera



ZYGAL Bullet



Basic Features

- **4 MP, 4 mm Fixed Lens:** Clearer and more detailed image capture
- **Bullet Design:** Streamlined and robust form
- **IP Camera with POE:** Enables easy and efficient connectivity
- **Metal Body:** Durable construction for longevity
- **IP66 Weatherproof:** Complete weather resistance
- **ONVIF Compatibility:** Effortless integration into existing systems
- **TF Card Storage Up To 256 GB:** Extended data retention
- **Mic:** Enhanced audio capture



Special Features

- **Health Check:** Ensures constant connectivity for uninterrupted surveillance
- **Cloud Backup:** Automated data protection to prevent loss
- **Dual IR With White Light:** Enhances visibility, provides color in night vision and acts as a deterrent
- **Speaker:** Improved communication



AI Features

- **AVCA Compression:** Efficient storage without compromising quality
- **AI-Based Intrusion Detection:** Augmented security with proactive threat identification
- **AI-Based Playback:** Detailed analysis for better insights



Bullet Specifications

| | |
|---------------------------------|---|
| Image sensor | 4MP |
| Image sensor size format | 1/3 Inch |
| Type of Enclosure | Metal - IP66 |
| Lens | Focal length: 4mm Aperture: f1.6 Fixed lens |
| IR night vision | Adaptive IR Dual Light with IR and White IR-cut filter IR range: 15m |
| Maximum resolution & Frame rate | Main stream: 4MP 2560×1440@25fps Sub-stream: D1(720*576), VGA (640*360) |
| Dynamic range | DWDR |
| Video compression | H.264+AVCA, H.265+AVCA |
| Speaker Support | Early Warning Alert |
| SD/TF Card | 256GB |
| Audio | In built Microphone |
| Security | TLS 1.2/AES128 |
| Network protocols | IPv4, HTTPS, TLS, DNS, mDNS, DNS-SD, NTP, Onvif Profile S, G, T RTSP, RTP, RTCP, ICMP, DHCP, ARP Streaming: RTP/UDP, RTP/RTSP/HTTPS/TCP |
| Power source | PoE, 12v DC |
| Power consumption | 12v 1A |
| Connection | PoE Ethernet, 12V DC connector |
| Installation aid | Mount template Screws and wall plugs included |

ZYGAL Bullet Plus

Step into superior surveillance
with Bullet Plus



ZYGAL Bullet Plus



Basic Features

- **5 MP/8 MP (4K) Varifocal Lens:** High-resolution monitoring for precise analysis
- **IP Camera with POE:** Enables easy and efficient connectivity
- **Metal Body:** Durable construction for longevity
- **IP66 Weatherproof:** Complete weather resistance
- **ONVIF Compatibility:** Effortless integration into existing systems
- **TF Card Storage Up To 256 GB:** Extended data retention



AI Features

- **AVCA Compression:** Efficient storage without compromising quality
- **AI-Based Intrusion Detection:** Augmented security with proactive threat identification
- **Human, Vehicle, and License Plate Recognition:** Precise identification for comprehensive surveillance
- **AI-Based Playback:** Detailed analysis for better insights



Special Features

- **Health Check:** Ensures constant connectivity for uninterrupted surveillance
- **Cloud Backup:** Automated data protection to prevent loss
- **Adaptive IR:** Enhanced imaging in varying light conditions



Bullet Plus Specifications

| | |
|---------------------------------|---|
| Image sensor | 8MP |
| Image sensor size format | 1/2.8 Inch |
| Type of Enclosure | Metal - IP66 |
| Lens | Focal length: 5.4mm-97.2mm Aperture: f1.8-f3.9 Varifocal lens |
| IR night vision | Adaptive IR IR-cut filter IR range: 20m |
| Maximum resolution & Frame rate | Main stream: 8MP 3840*2160@20fps , 5MP 2592*1904@25fps Sub-stream: D1(720*576)@25fps, VGA(640*480)@25fps,Q720P(640*360)@25fps |
| Dynamic range | 120db WDR (true) |
| Video compression | H.264+AVCA, H.265+AVCA |
| Speaker Support | NA |
| SD/TF Card | 256GB |
| Audio | NA |
| Security | TLS 1.2/AES128 |
| Network protocols | IPv4, HTTPS, TLS, DNS, mDNS, DNS-SD, NTP, Onvif Profile S, G, T RTSP, RTP, RTCP, ICMP, DHCP, ARP Streaming: RTP/UDP, RTP/RTSP/HTTPS/TCP |
| Power source | PoE, 12v DC |
| Power consumption | 12v 1A |
| Connection | PoE Ethernet, 12V DC connector |
| Installation aid | Mount template Screws and wall plugs included |

Zygal Integrated Command & Control Centre

Cloud-based & AI-powered technology platform
that unifies your security ecosystem



Integrated Solutions

Set-up Your Own Integrated Command & Control Centre with India's Biggest Cloud Solution Provider with with State-of-the-art AI RPA (Robotic Process Automation)

Zygal's integrated command and control solution offers businesses a cloud-based & AI-powered technology platform that unifies cameras, sensor data, workflows, and SOPs. The ability to visualize and optimize operations on a unified and intuitive interface provides real-time monitoring, continuous assessment and situational awareness to trigger immediate response.



KEY FEATURES:

- End-to-end Data Encryption with AES 256 and additional hardware-level key
- High-performance P2P, TURN, STUN server implementation for seamless video streaming
- 40+ AI/ML Models implemented on the platform
- Full-stack application ecosystem

Integrating People, Processes & AI into a Single Powerful Ecosystem



- Smoke/ Fire detector
- Two-way Audio
- Lighting Automation
- HVAC controller
- Intrusion sensor
- IP speakers
- Temperature Sensor
- Humidity Sensor
- AI solutions
- Lux Sensor

Robotic Process Automation

80% Manpower Savings. 100% Compliant.
with the first RPA tool for the e-surveillance industry



Workflow Management

Adds a layer of intelligence to business processes. Visualize, optimize, and adapt your workflows in real-time to enjoy enhanced productivity and resource utilization.



SOP Integration

Ensure compliance, consistency, and accuracy in business operations by enforcing standardized processes, reducing deviations, and achieving a higher level of quality assurance.



40+ Advanced AI & ML modules for custom AI Solutions

Custom solutions that empower organizations to address unique challenges and capitalize on opportunities.



High performance, never-to-miss incident

Live device data and notifications for Quick actions as per their WFM and SOP



Agent alert measurement using AI and FR

Accurate assessment of security personnel but also empowers organizations to proactively address potential vulnerabilities.



Zygal Access Control Solutions

With Time Attendance Solutions



Access Control

Introducing Flex: Cloud-based Access Control System With Time Attendance Management

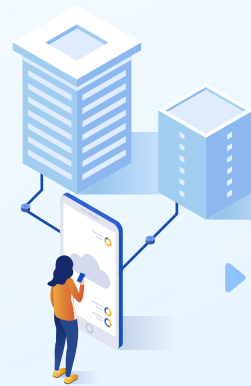
Forget the traditional ways of controlling access to any entryway like RFID-based key cards and biometric locks, which come with its own set of challenges. Our state-of-the-art yet user-friendly access control solution is easy to install, integrates with your existing ecosystem and simplifies the entire system for admins, making it even more secure.

Key Features:



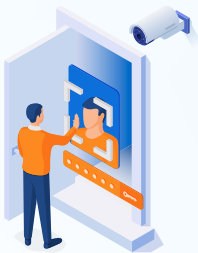
Turn Any Phone into a Virtual Key Card

Cloud-connected mobile app access solution allows users to unlock doors or gain entry by tapping their mobile devices without the need for physical keys or access cards.



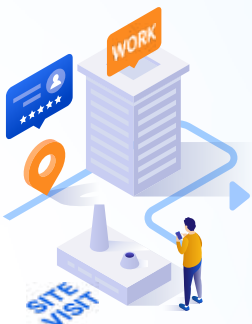
Role-based Access Control

Set up gated access to critical areas within the organisation as per roles. Access can be allocated to authorized personnel only, floor and room-wise.



FR-Based Attendance Management

Allows enterprises to manage their employees' attendance using mobile tap entry and facial recognition technology.



Remote-Location Attendance

Allows employees the flexibility to log in and out from any location. Along with face capture, the app also stores location data to ensure authenticity and time-tracking logs.



Diverse Use Cases



Efficient Office Entry Management

Enhance office security with our access control system designed for streamlined entry management. Our solution provides a seamless and secure environment, allowing only authorized personnel into office premises.

Airtight Security For Banks & Vaults

Your key to secure vaults is here. Our access control solution ensures complete protection of vaults with 2-way authentication. We empower organisations with centralised control, safeguarding against theft, burglary, and unauthorised access to your valuable assets.



Simplified Parking or Vehicle Entry Management

Our innovative Bluetooth-powered solution with adjustable range settings is ideal for parking management and secure access in housing societies. Skip the wait for security personnel – easily access boom barriers via our smartphone app.



Smart Turnstile Gate Entry

Revolutionize turnstile-based entry points with our intelligent access control system. Designed for high-traffic areas, our solution ensures smooth and secure entry, offering both convenience and robust security measures.





ZYGAL



Zygal, 6th Floor, The kode, Baner - Pashan Link Rd,
Pashan, Pune, Maharashtra 411045



8799963689 / 8799912019



marketing@zygal.io



<http://aiot.zygal.io/>